

She Found Jesus Alive

Words and Music by
CARROL ROBERSON

Choral Arrangement by Mike Speck,
Lari Goss and Danny Zaloudik

Bright country feel ♩ = 100

25 G(no3)

G7(no3)

3

E7 F7 F#7
WOMEN unison *mf*

When

5 G7

Mar - y came to the tomb— Je - sus was gone, she

© 1996 Chestnut Mound Music/Jesus Is Real Music
All Rights Reserved. Used by Permission.

EVEN IF YOU POSSESS A CCLI LICENSE, YOU MAY NOT COPY THIS MUSIC.
If you have questions about CCLI, please call 800/234-2446.

7

saw two an - gels in white. Then she

9 F7

heard Je - sus say, "Wom - an, why weep - est thou? Go

11 C7 G7 C

tell My dis - ci - ples I'm a - live!"

13 CHOIR mf

(mel.) She found the Morn - in' Star a - shin - in'.

G7

15

17

1

15

She found the Rock of A - ges stand - in'.

17

She found the Rose of Shar - on bloom - in'.

19

2nd time to Coda Φ
(to meas. 47)

26

She found Je - sus a - live. —

2nd time to Coda Φ
(to meas. 47) C

C7

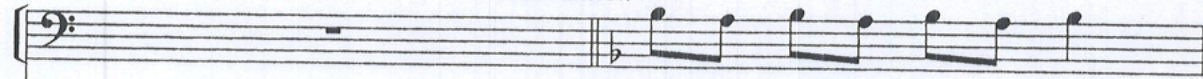
69

22

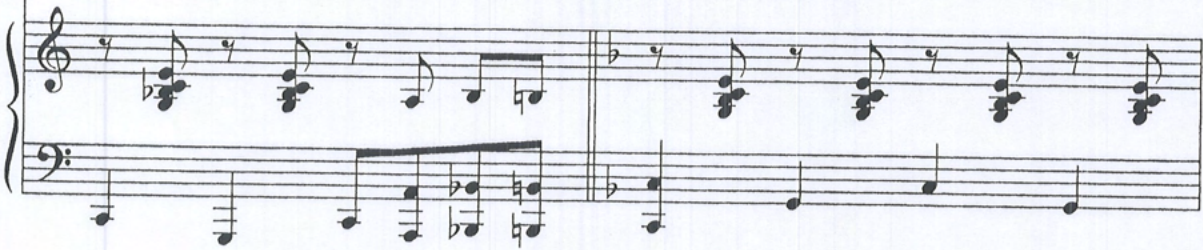
N.C.

MEN unison

C7

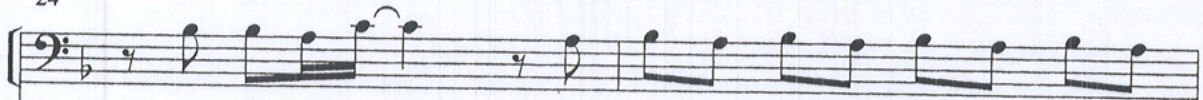


Mar - y was the first to find

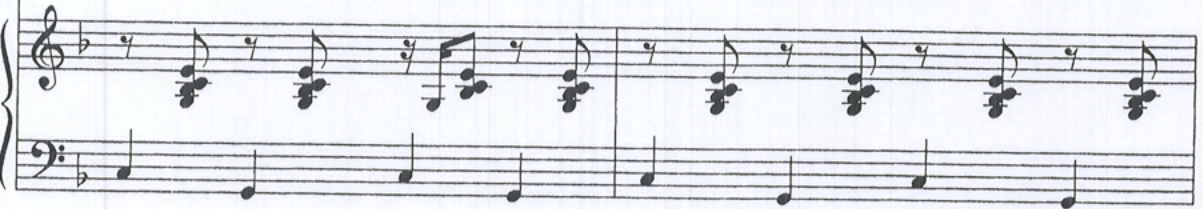


69

24



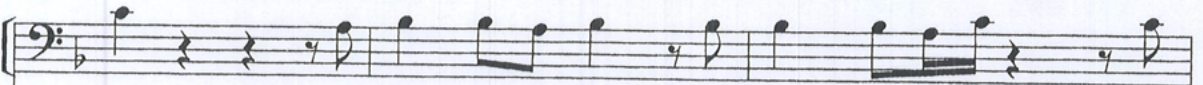
Je - sus a - live, — the one who sev - en de - mons were cast



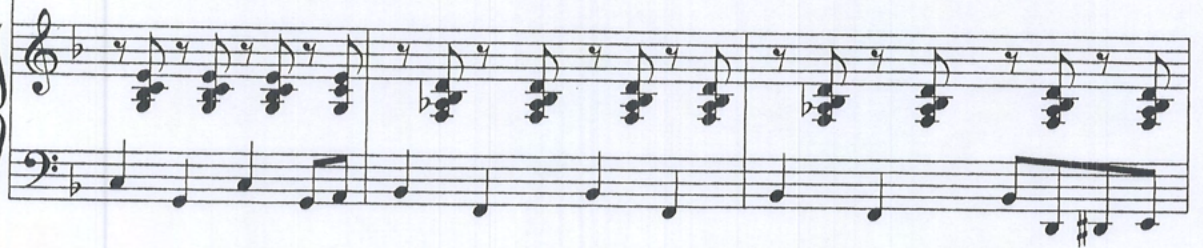
69

26

Bb7



out. She loved Je - sus more than all of the rest. She



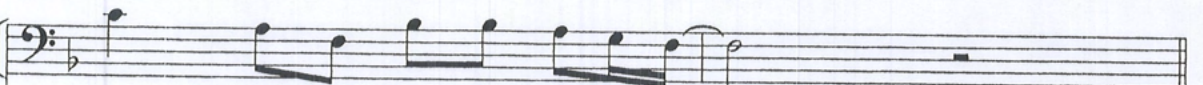
69

29

F7

C7

F



knew what the cross was all a - bout. —



69

31 *CHOIR*

She found the Morn - in' Star a - shin - in'.

(mel.)

C7

Detailed description: This system contains measures 31 and 32. It features a vocal line in the upper staff and a piano accompaniment in the lower staff. The vocal line is in a soprano or alto clef, and the piano accompaniment is in a grand staff. The key signature has one flat (B-flat), and the time signature is 7/8. The lyrics are 'She found the Morn - in' Star a - shin - in'.

33

She found the Rock of A - ges stand - in'.

Detailed description: This system contains measures 33 and 34. It features a vocal line in the upper staff and a piano accompaniment in the lower staff. The key signature has one flat (B-flat), and the time signature is 7/8. The lyrics are 'She found the Rock of A - ges stand - in'.

35

She found the Rose of Shar - on bloom - in'.

Detailed description: This system contains measures 35 and 36. It features a vocal line in the upper staff and a piano accompaniment in the lower staff. The key signature has one flat (B-flat), and the time signature is 7/8. The lyrics are 'She found the Rose of Shar - on bloom - in'.

37 27 (mel.) opt. SOLO
unison

She found Je - sus a - live. — Some

unison

F F#7

39

peo - ple think of Je - sus — who lived long a - go, they

G7

41

read a - bout — what his - t'ry has to tell. But they

43

nev - er come to know— His res - ur - rec - tion pow'r. He's a - live,—

F7

D.S. al CODA (Back to meas. 13)

45

a - live— and well!

C7

G7

C

D.S. al CODA (Back to meas. 13)

CODA

47

She found Je - sus a - live.—

CODA

C

G7

49 28

She found Je - sus a - live!_

Detailed description: This block contains the vocal line for measures 49 and 50. The music is in 4/4 time. Measure 49 starts with a whole rest, followed by a half note G4, a quarter note A4, a quarter note B4, and a half note C5. Measure 50 continues with a half note G4, a quarter note A4, a quarter note B4, and a half note C5. The lyrics are "She found Je - sus a - live!_" with a line under "live!".

C G7

Detailed description: This block contains the piano accompaniment for measures 49 and 50. The right hand plays a steady eighth-note accompaniment of G4, A4, B4, C5. The left hand plays a simple bass line: G2, A2, B2, C3 in measure 49, and G2, A2, B2, C3 in measure 50.

51

Detailed description: This block contains the piano accompaniment for measures 51 and 52. The right hand plays a steady eighth-note accompaniment of G4, A4, B4, C5. The left hand plays a simple bass line: G2, A2, B2, C3 in measure 51, and G2, A2, B2, C3 in measure 52.

C E7/B

Detailed description: This block contains the piano accompaniment for measures 53 and 54. The right hand plays a steady eighth-note accompaniment of G4, A4, B4, C5. The left hand plays a simple bass line: G2, A2, B2, C3 in measure 53, and G2, A2, B2, C3 in measure 54.

55 *f*

(mel.)

She found the Morn - in' Star a - shin - in'.

Detailed description: This block contains the vocal line for measures 55 and 56. The music is in 4/4 time. Measure 55 starts with a half note G4, a quarter note A4, a quarter note B4, and a half note C5. Measure 56 continues with a half note G4, a quarter note A4, a quarter note B4, and a half note C5. The lyrics are "She found the Morn - in' Star a - shin - in'." with a line under "shin - in'".

A7

Detailed description: This block contains the piano accompaniment for measures 55 and 56. The right hand plays a steady eighth-note accompaniment of G4, A4, B4, C5. The left hand plays a simple bass line: G2, A2, B2, C3 in measure 55, and G2, A2, B2, C3 in measure 56.

57

a - live!_

She found the Rock of A - ges stand - in'.

59

She found the Rose of Shar - on bloom - in'.

61

She found Je - sus a - live.---

D

63

She found Je - sus a - live. —

Detailed description: This system contains measures 63 and 64. The vocal line is in treble clef with a key signature of two sharps (F# and C#). The lyrics are "She found Je - sus a - live." with a long dash after "live". The piano accompaniment is in bass clef, featuring a steady eighth-note bass line and chords in the right hand.

A7 D

Detailed description: This system shows the piano accompaniment for measures 63 and 64. The right hand plays chords in a rhythmic pattern, while the left hand plays a simple eighth-note bass line. Chord symbols "A7" and "D" are placed above the staff.

65

She found Je - sus a - live!

Detailed description: This system contains measures 65 and 66. The vocal line continues with the lyrics "She found Je - sus a - live!" and ends with a fermata. The piano accompaniment continues with the same rhythmic pattern as in the previous system.

A7 D

Detailed description: This system shows the piano accompaniment for measures 65 and 66. The right hand plays chords in a rhythmic pattern, while the left hand plays a simple eighth-note bass line. Chord symbols "A7" and "D" are placed above the staff.

67

Detailed description: This system contains measures 67 and 68. The piano accompaniment continues with the same rhythmic pattern. The right hand has a melodic line with some grace notes, and the left hand has a steady eighth-note bass line.

A D

drum fill

Detailed description: This system shows the piano accompaniment for measures 67 and 68. The right hand has a melodic line with some grace notes, and the left hand has a steady eighth-note bass line. Chord symbols "A" and "D" are placed above the staff. A "drum fill" is indicated in the right hand at the end of measure 68.

NARRATOR:

Mary Magdalene was the first to reach the tomb of Jesus that Easter morning. Her life, once scarred by sin, had been transformed by the ever-cleansing love of God. He had given her a brand new heart and a brand new life. What a sight it must have been that morning, when she encountered angels at the garden tomb where Jesus had laid. One spoke to her and told her to go find Peter and the other disciples and tell them that Jesus was no longer there. (*music begins to "Do You Love Me?"*) He had risen from the dead! Did the angel make a mistake by singling out the disciple, Simon Peter? Not at all! Remember, it was Peter who had denied the Lord at the most crucial moments of Jesus' life. Not once but three times . . . cursing and deserting Him. It was Peter that had lied and acted like he didn't even know the Lord.

We know from Scripture that he then went out and wept bitterly. Surely, he must have wondered if Jesus would ever forgive him? Could things ever be like they once were?